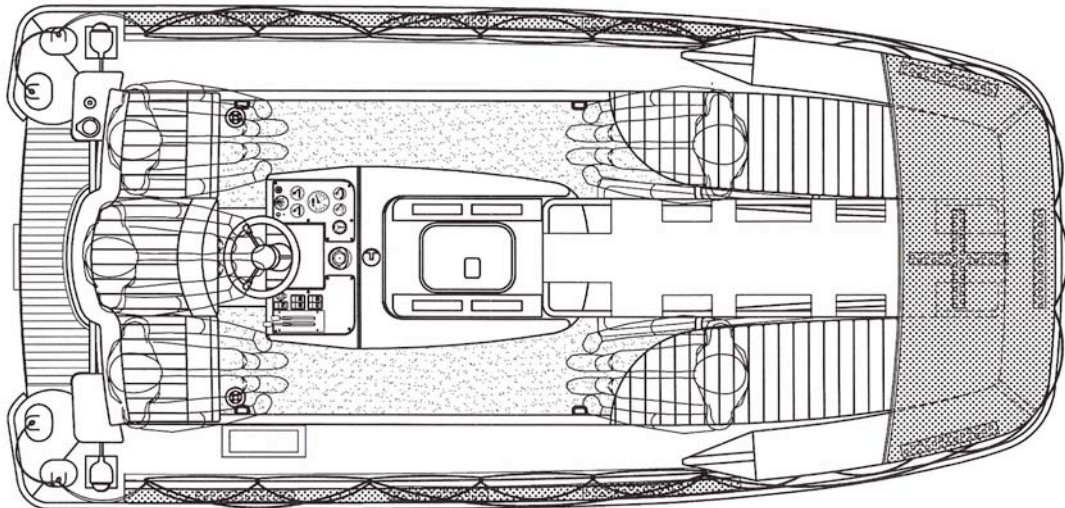
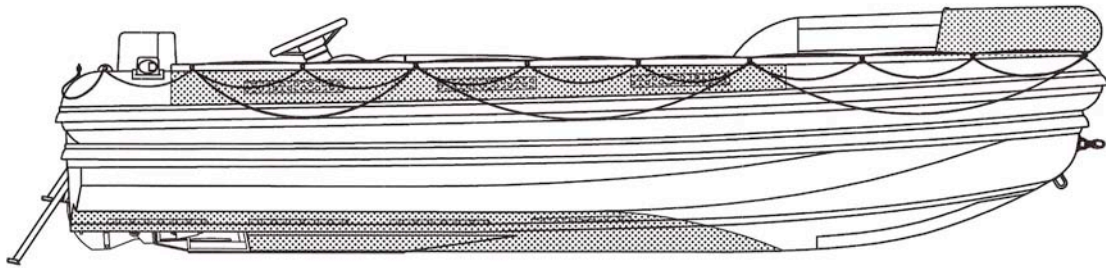


JET TENDER® 14 – RESCUE BOAT with MED Type Approval Certification for yachts under LY2 code



DIMENSIONS

Length o.a.:	4,25 m.
Beam max.:	2,08 m.
Height max.:	1,04 m.
Diameter inflatable tubes (at stern):	0,32 m.
Independent tube's compartments:	No. 5 + B.I.S.S.
Passengers capability (C.E. directive):	No. 5 + 1
Design category (C.E. directive):	C

STANDARD EQUIPMENT

Engine: SOLAS approved Yanmar marine diesel engine type *4JH3-DTE* developing 125 HP @ 3.800 rpm, 4L cylinders, 1.995 cc displacement, equipped with twin circuit cooling system and stainless steel marinemounts.

Drive: Waterjet unit Castoldi type *Jet 05* equipped with Durethan impeller, integrated gearbox, mechanical disconnecting clutch, movable debris screen grid on water intake, all oil lubricated bearings - Kit for fresh water cooling the engine's raw water circuit.

Matching system: C.V. joint

Controls: Sea Star hydraulic steering system with stainless steel steering wheel - Twin lever box for the mechanical/hydraulic control of the reversing deflector and for the mechanical control of the throttle - Knob for the control of the mechanical disconnecting clutch - Handle for the control of the debris screen grid.

Electrical: Sets of 12 V free maintenance, hermetic batteries with temporary parallel switch - Two main switches - Charge splitter/selector - Navigation lights - Led courtesy deck lights - 12V accessory socket - Electric horn - Automatic electric bilge pumps - All electrical system fitted with fuses and circuit breakers - All sealed electrical connections - Compass with light wheel marked - Portable VHF wheel marked - Portable watertight search light.

Dashboard with instruments: Starting key - Engine’s instruments - Watertight switches - Reversing deflector position gauge - Safety engine stop - Fuel level gauge

Anchoring, mooring, lifting and towing: Anchor, Danforth type, Kg. 5, made of polished stainless steel, with chain 2,00 m. and rope 15,00 m. long - No. 1 recessed single point lifting hook - No. 2 pull-up stainless steel cleats - No. 5 towing eyes (No. 1 bow, No. 2 bow/side, No. 2 transom) - No. 4 folding stainless steel lifting eyes - Safety quick release hook - Bow fast release hook - Ski tow.

Fuel system: Under-deck stainless steel fuel tank, 62 lts capacity with on-deck fill and vent - Fuel shut-off solenoid valve - Racor fuel-water separator filter.

Exhaust system: Stainless steel pipe with integrated muffler.

Seating: No. 2 seats on fore benches - Stretcher space - No. 3 seats on aft bench.
All cushions and backrests in white leather-like upholstery with inspectionable encapsulated soft foam.

General: M.A.R. (manually aided righting) system - Drain plugs - Transom platform teak laid - Stainless steel telescopic ladder with No. 3 teak steps - Bow and stern grab rails - Rubber handles on engine’s hatch and on hull’s side - Keel protection (replaceable) - Waterproof console cover - Engine room air intakes - B.I.S.S. (bow inflatable spray shield) - Twin perimetrical fenders system (one on tube one on hull) - Safety lines on both sides - Kit for tubes’ emergency repair - Air pump, manual - Fire extinguisher - Pair of paddles - Owner manual - Engine’s hatch - Engine room’s acoustic and thermal insulation - Under seats storage lockers.

Rescue grab bag including: buoyant bailer, bow painter 15 m in length, buoyant line 50 m in length for towing liferafts, waterproof electric torch suitable for Morse signalling together with one spare set of batteries and one spare bulb in a waterproof container, whistle, first aid outfit in waterproof case, No. 2 buoyant rescue quoits attached to 30 m buoyant line, radar reflector (MED), No. 2 thermal protective aids, binnacle containing compass provided with means of illumination (MED), buoyant safety knife, No. 2 sponges, buoyant sea-anchor and tripping line 10 m in length (MED).

Standard colours: White tubes - light grey, navy blue or black fender on tube - white hull, console, deck, engine hatch - white cushions - white rain/spray dodger, boat cover - Orange painted keel area - No. 2 orange fabric side patches (removable) - Orange fabric bow cover (removable)

RETAIL PRICE (EX CASTOLDI WOKS, V.A.T. EXCLUDED)

Boat is delivered protected by fabric cover and positioned on wooden cradle

OPTIONAL EQUIPMENT

Canvas

- Boat cover.....

Colours, Writings and Matherials

- No. 2 writings “TENDER TO....” made on Hypalon-Neoprene coated fabric vulcanized on both sides with customized graphics.....

Electronics

- Depthsounder/Fishfinder Garmin ”ECHO 300 C”.....
- Inflator/Deflator (portable) 12 V flow rate 1000 l/min

Safety

- Kit of engine’s spare parts.....
- Kit of waterjet unit’s spare parts